



Innovations in Truck Parking –Tennessee

TDOT

Dan Pallme
Freight & Logistics Division: Tennessee DOT

June 22, 2022

History – 3 Research Projects

- **2016 – Federal pilot**



History – 2nd Research Project

- **RES 2016 – June 2017**
 - **Ramp Truck Parking**
 - Private parking facilities also often do not have adequate parking capacity. Truck drivers are struggling to find safe parking facilities to rest and meet the federal hours-of-service (HOS) requirements. Lack of available parking or other behavioral barriers often manifests with trucks illegally parking on interstate on- and offramp shoulders. Without adequate information about available parking, many drivers are also forced to exceed HOS regulations to find appropriate parking.

History – 3rd Research Project

- **RES 2019 – Nov. 2020**
 - **Truck Parking Needs in Tennessee**
 - Whether needed for staging, pick-ups & deliveries or hours-of-service compliance, truck parking is a critical component of supply chain operations. However, there is a huge gap between the demand and supply of truck parking facilities in many states. The purpose of this project is to provide TDOT with guidance on truck parking issues and opportunities, by identifying parking needs (i.e., addition of capacity and/or construction of new facilities); developing truck parking violation rates (i.e., truck parking on on- and off- ramps) and developing/applying a methodology to identify candidate locations for new truck parking facilities in the State of TN.

History – 3rd Research Project

ID	Location	Current Capacity	Median Util. (2035)	Area	Amenities	Private parking in proximity with available capacity
3	RA EB I-40 MM73	10	123%	Positive	Yes	No
4	RA WB I-40 MM73	10	123%	Positive	Yes	
7	RA EB I-40 MM130	10	82%	Positive	Yes	
8	RA WB I-40 MM130	10	82%	Positive	Yes	No
9	RA EB I-40 MM170	13	95%	Positive	Yes	
10	RA WB I-40 MM170	13	95%	Positive	Yes	
11	WC EB I-24 MM 0.5	23	71%	Positive	Yes	No
12	WC WB I-24 MM 0.5	31	106%	Positive	Yes	
16	WC SB I-65 MM121	15	109%	Neutral	Yes	
17	WC NB I-65 MM121	21	98%	Neutral	Yes	ID: 24, Capacity: 20, MU: 21%
25	WC WB I-24 MM160	12	102%	Neutral	Yes	No
26	WC EB I-24 MM172	16	77%	Neutral	Yes	No
41	RA WB I-40 MM426	19	108%	Negative	Yes	No
46	WC WB I-40 MM267	15	82%	Positive	Yes	No
47	WC EB I-40 MM267	15	82%	Positive	Yes	No

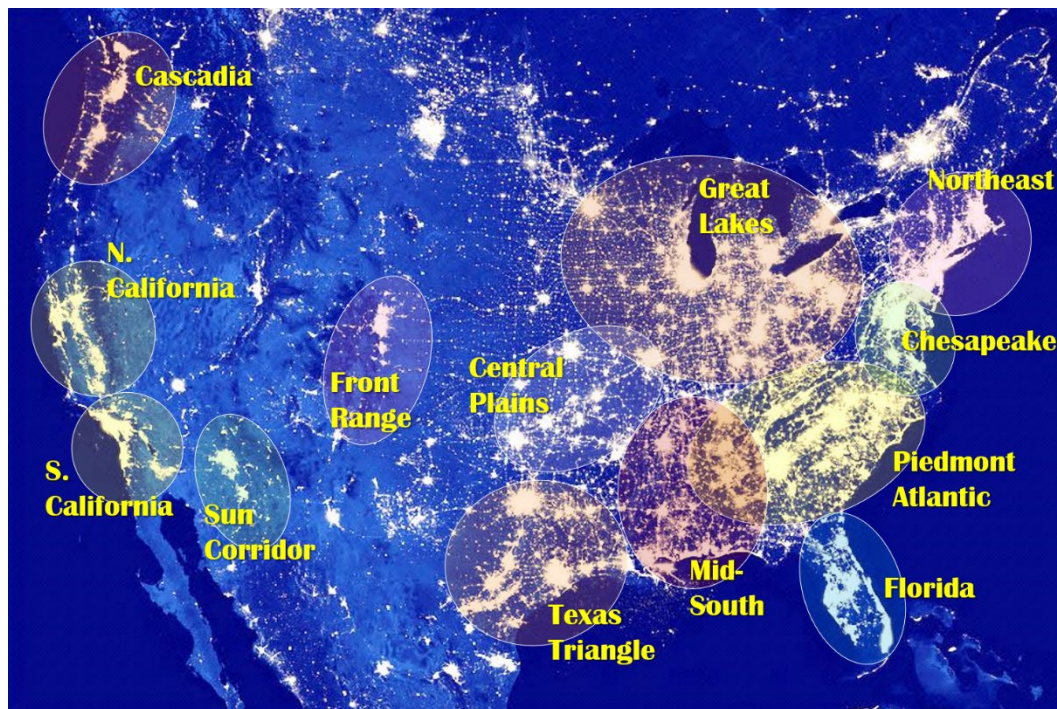
Notable other related truck parking ideas

- **National Economic Partnership project**
- **University of Memphis – 2021 NOCoE Transportation Technology Tournament**
- **Conversations with travel center operators**

Future Freight Movement along Freight Alley

Project Purpose – Need: Why did we do this?

- Go Beyond Boundaries and Discover Regional Advantages
- Collaborative Economic Development through Industry Clustering Analysis



Automotive
Manufacturing



Aerospace
and Aviation
Manufacturing



Agri-Production
and Food
Products



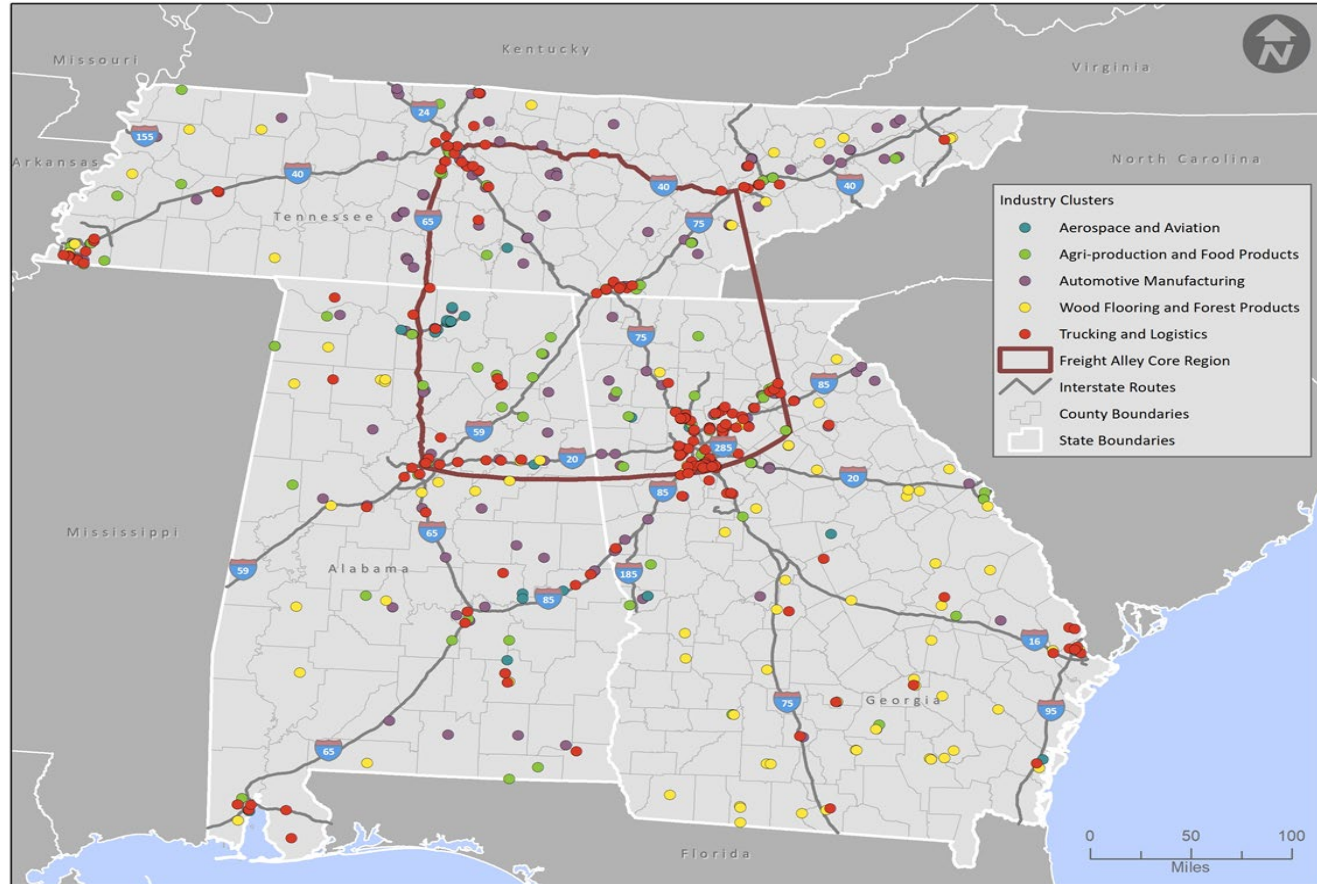
Wood Flooring
and Forest
Products



Trucking and
Logistics

NEP -Project Outcomes/Benefits:

- **Megaregional Jurisdictional Planning for Industry Clusters**
- **Where Truck Parking and Amenities are Needed**
- **Duplication of Study in Other Megaregions**



<https://www.tn.gov/content/dam/tn/tdot/freight-and-logistics/Consolidated%20NEP%20Final%20Report%20with%20Appendices.pdf>

NEP-Future Freight Movement along Freight Alley

Collaboration with Private and Public Sector Truck Parking Coordination in Multi-State Area

# Parking spots – Public and private	Alternative Fuel Locations
Restrooms	Food service
Vending machines	Showers
Weigh stations	Security

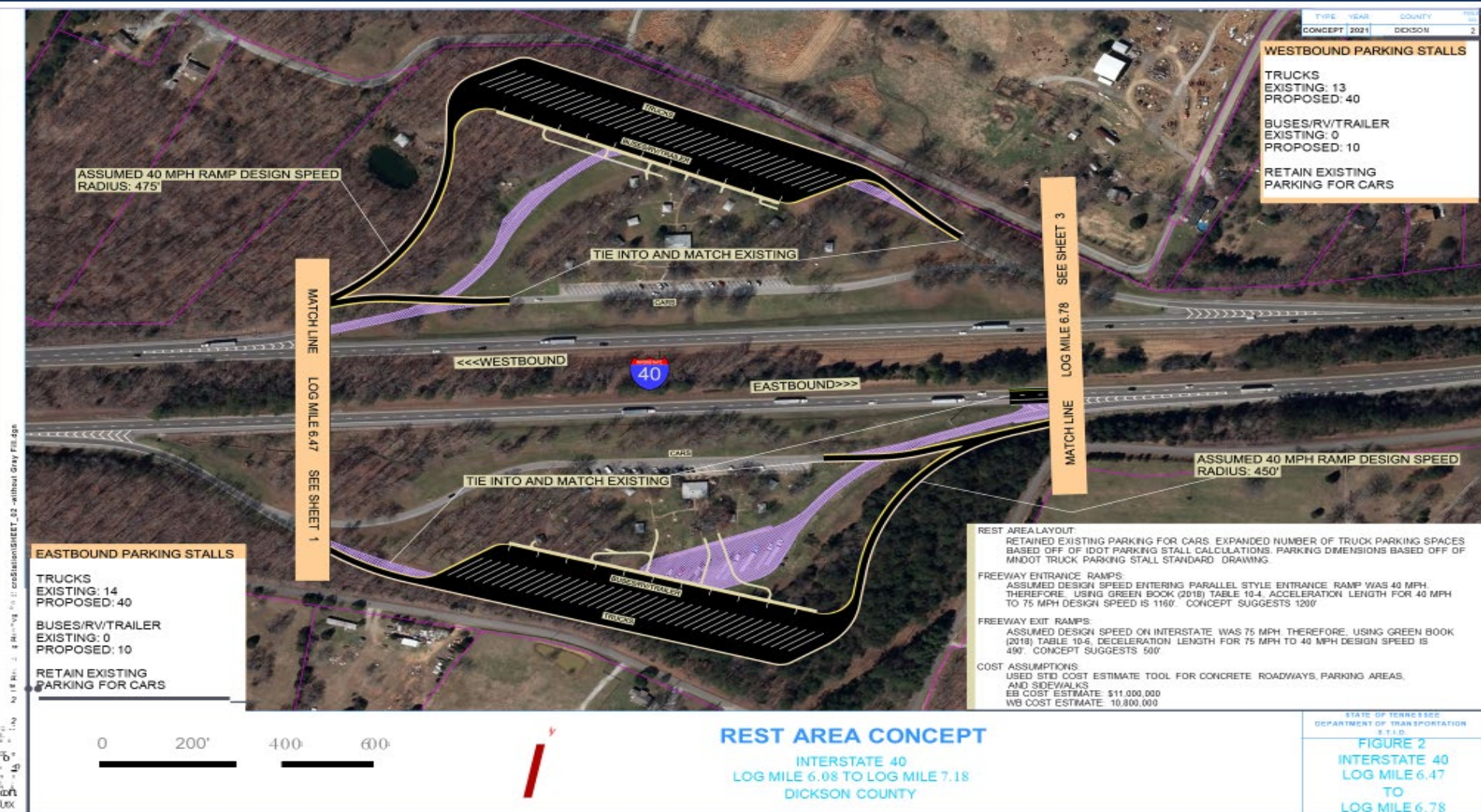
U of M Master's Class Project – I40 MM73WB



U of M Master's Class Project – I40 MM73 EB



Expansion –current rest area



Next Steps in Tennessee

- **Federal Grants for truck parking**
 - **INFRA example (MM 326)**
 - **Appalachian potential study**
 - **Multi-state collaboration (ETC)**
 - **Other programs to address**
- **Technology enhancements- TMS**
- **Future Data Analysis**

Next Steps in Tennessee (cont.)

- **Re-work former weigh scale stations**
- **Work internally on expansion of current rest areas**
 - **Diagonal spaces**
 - **Unattended truck parking locations**
- **Continued dialogue with travel center operators**
- **Truck parking notification system**