

Moving Forward , Working Together



- ◆ State Agency Highway Incident Road Closure Framework
- ◆ 511PA Connect
- ◆ Waze

Overview

- ◆ **State Agency Highway Incident Road Closure Framework**
- ◆ **511PA Connect**
- ◆ **Waze**



Traffic Operations Updates

Commonwealth of Pennsylvania

**State Agency Highway Incident
Road Closure Framework**

511PAConnect Standard Operating Procedure



September 2016

Roadway Incident Action Timeline

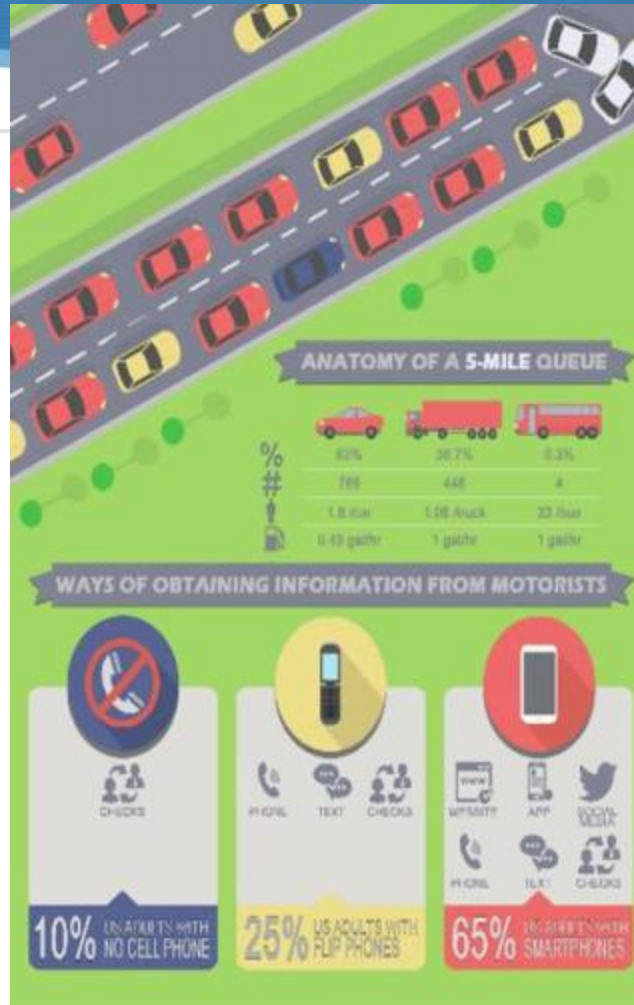
Consolidated Roadway Incident Action Timeline

| Procedures | Incident Planning Timeline | | | | |
|-------------------------|--|---|--|-------------------------------------|---|
| | 0-2 hours | 2-4 hours | 4-6 hours | 6-8 hours | 8+ hours |
| Incident Assessment | Initial Assessment | Recon | Primary Assessment | Secondary Assessment | Continuing Recon as Needed |
| Targeted Assessment | Ongoing (Coordinated Among Involved Agencies) | | | | |
| Joint Messaging | Planning | Initial Messaging to Stranded Motorists | Detailed Messaging to Stranded Motorists to Establish Two Way Communications and Provide Information | | Ongoing Messaging as Needed |
| Food/Water Distribution | Commodity Mobilization/Distribution Planning | | | Implementation of Distribution Plan | |
| Shelter in Place | Shelter in Place Preparations | Initiation of Shelter in Place Strategy | | Re-evaluate and Consider Evacuation | |
| Voluntary Evacuation | | Voluntary Evacuation Planning | | | Implementation of Voluntary Evacuation Plan |
| Trapped Queue Release | Ongoing Procedures to Relieve Trapped Queue Using Any Number of Approaches Such as Turning Vehicles Around, Opening a Lane of Travel to Permit Vehicles to Travel Past Incident, or Removing Roadway Barriers or Median Dividers | | | | |

NOTE: ABOVE NOTED INCIDENT PLANNING TIMELINE IS CONSIDERED TO START UPON ARRIVAL OF INITIAL RESPONSE RESOURCES



511PA Connect



- PEMA, PennDOT and PTC
- Extended closures
- Trapped backlog communication



511PA Connect

STEP 1

You are stuck in a closed line of traffic for several hours.



STEP 2

Once the incident is assessed, we send you an emergency text – much like an Amber Alert – based on your location.





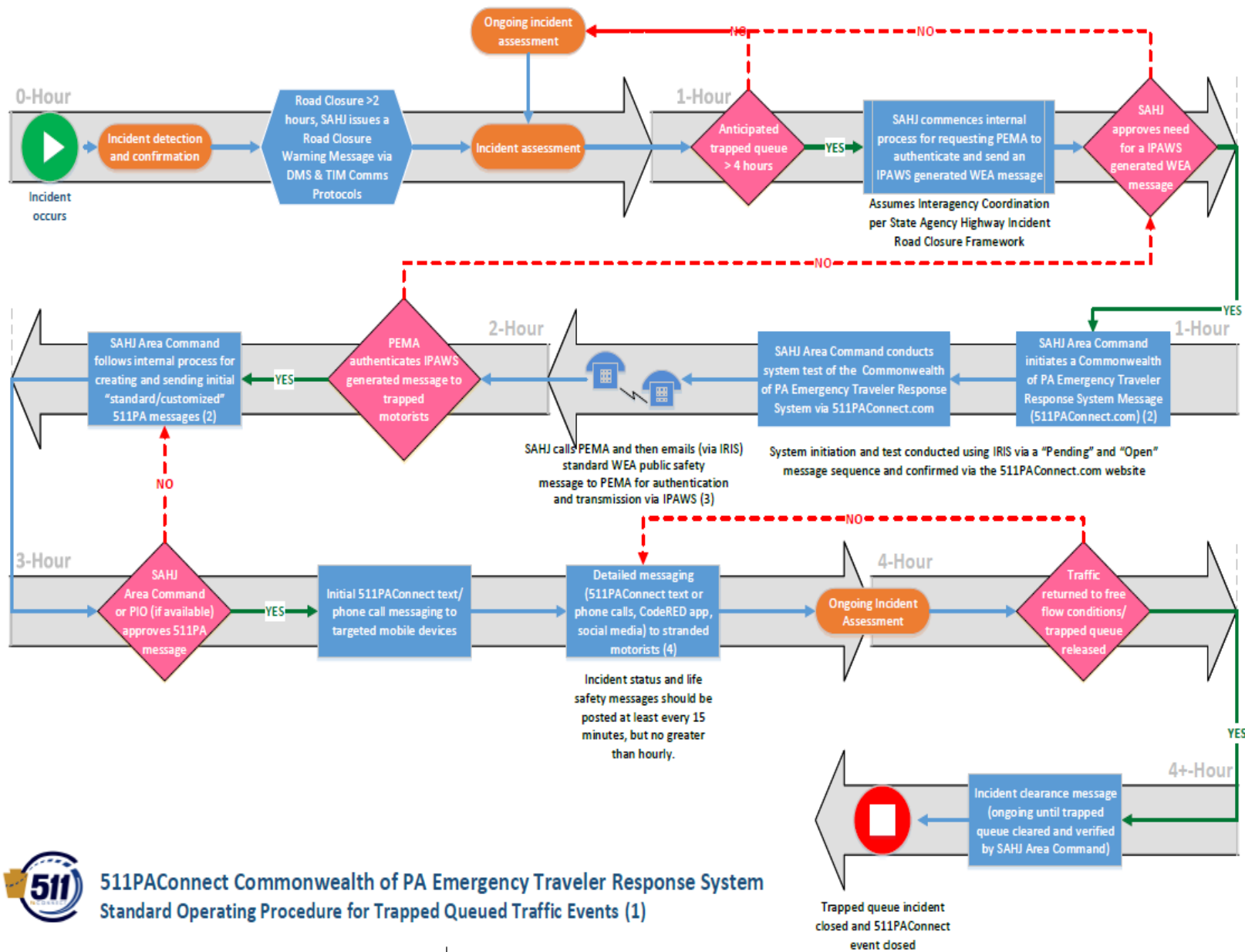
511PA Connect

STEP 3

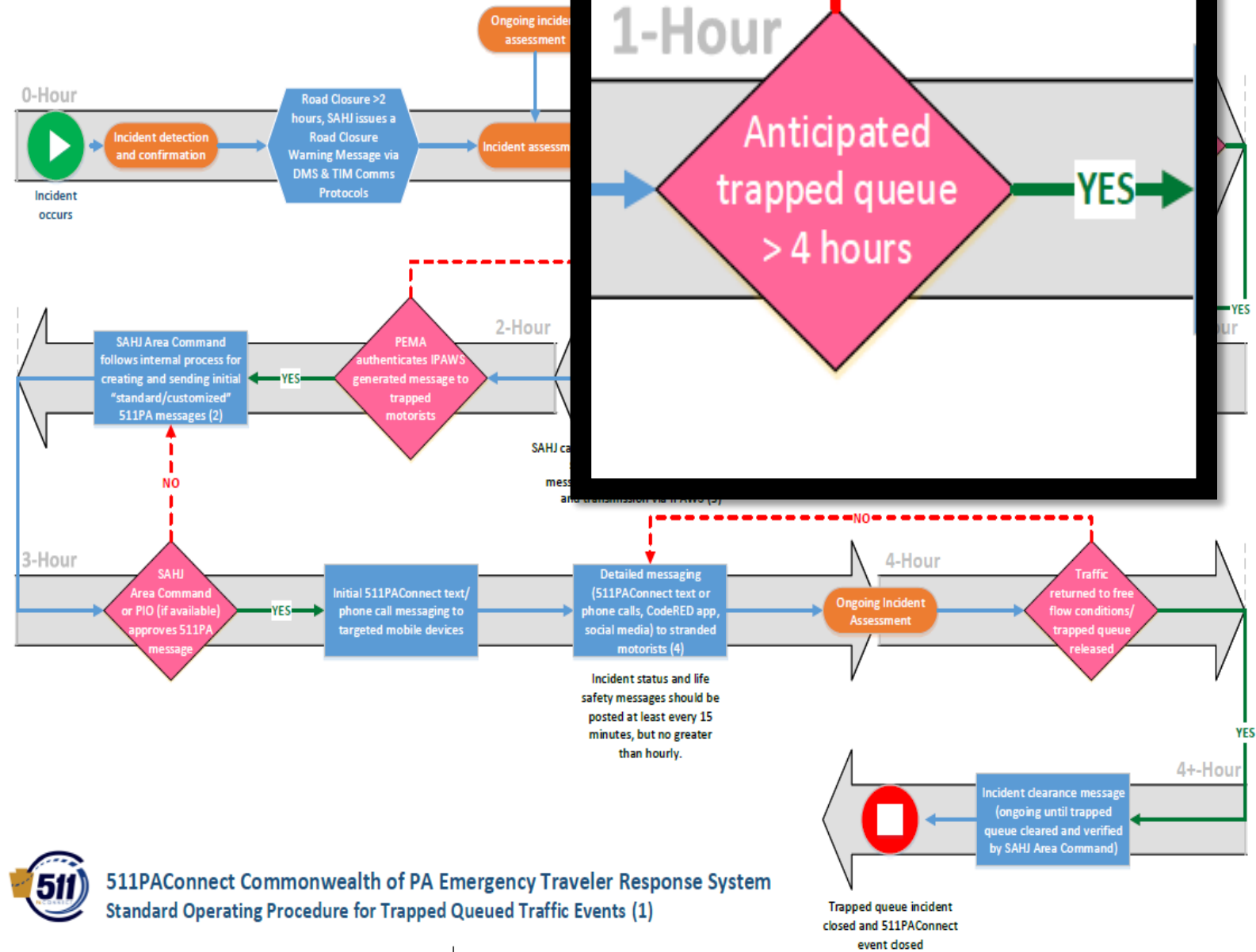
You are directed to a site to register for continued messages about the incident

STEP 4

You receive updates on the incident and safety tips until the event is cleared.



511PAConnect Commonwealth of PA Emergency Traveler Response System Standard Operating Procedure for Trapped Queued Traffic Events (1)





511PA Connect - ADMIN

Edit Closure

Update the closure by clicking in the current conditions box and editing the text. Click Save Changes to record your updated information. Otherwise, click Cancel. By changing status to Closed, the closure will be removed from the PA Emergency System.

Event

Title

Description

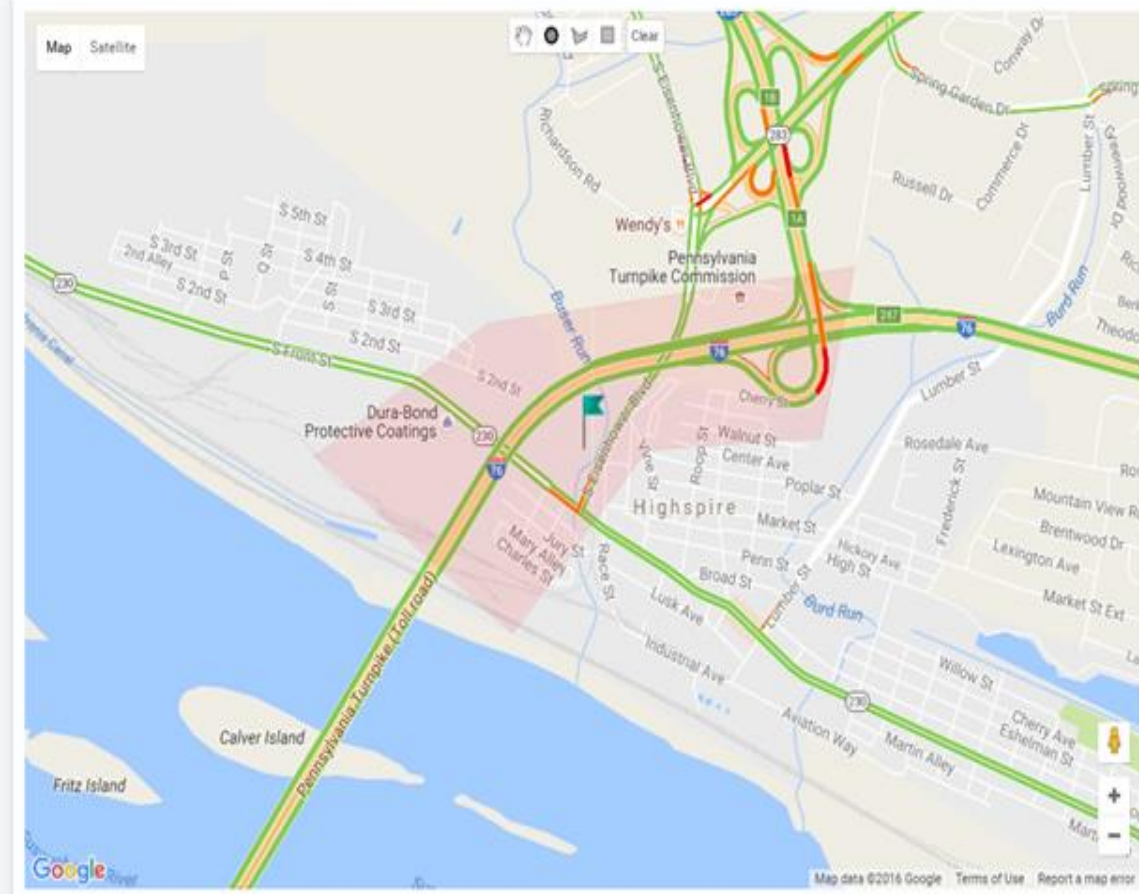
Centerpoint Latitude

Centerpoint Longitude

Status

☒ Send IPAWS Alert

To create a new closure, click the red "add new" button.





511PA Connect -USER


63% 12:20 PM

The following 3 emergency closures have been activated. Click 'Register for this Closure' if you are within the shaded boundary of a closure. Registration will advise Pennsylvania authorities of your location and provide you with updates as they are available. Please refresh this page regularly for updates.

Closure: I-76 WB Closure between exits 247 and 242

Description: Test closure due to severe icing.

Register for this Closure



Google Map data ©2016 Google

Last Updated: 11/30/2016 12:20 PM

Correspondence Log

84% 12:25 PM

I-76 WB Closure between exits 247 and 242
Test closure due to severe icing.
Status: Open Last Updated: 11/30/2016 12:20 PM

Mobile Phone #

Contact Me Via:

Text Message

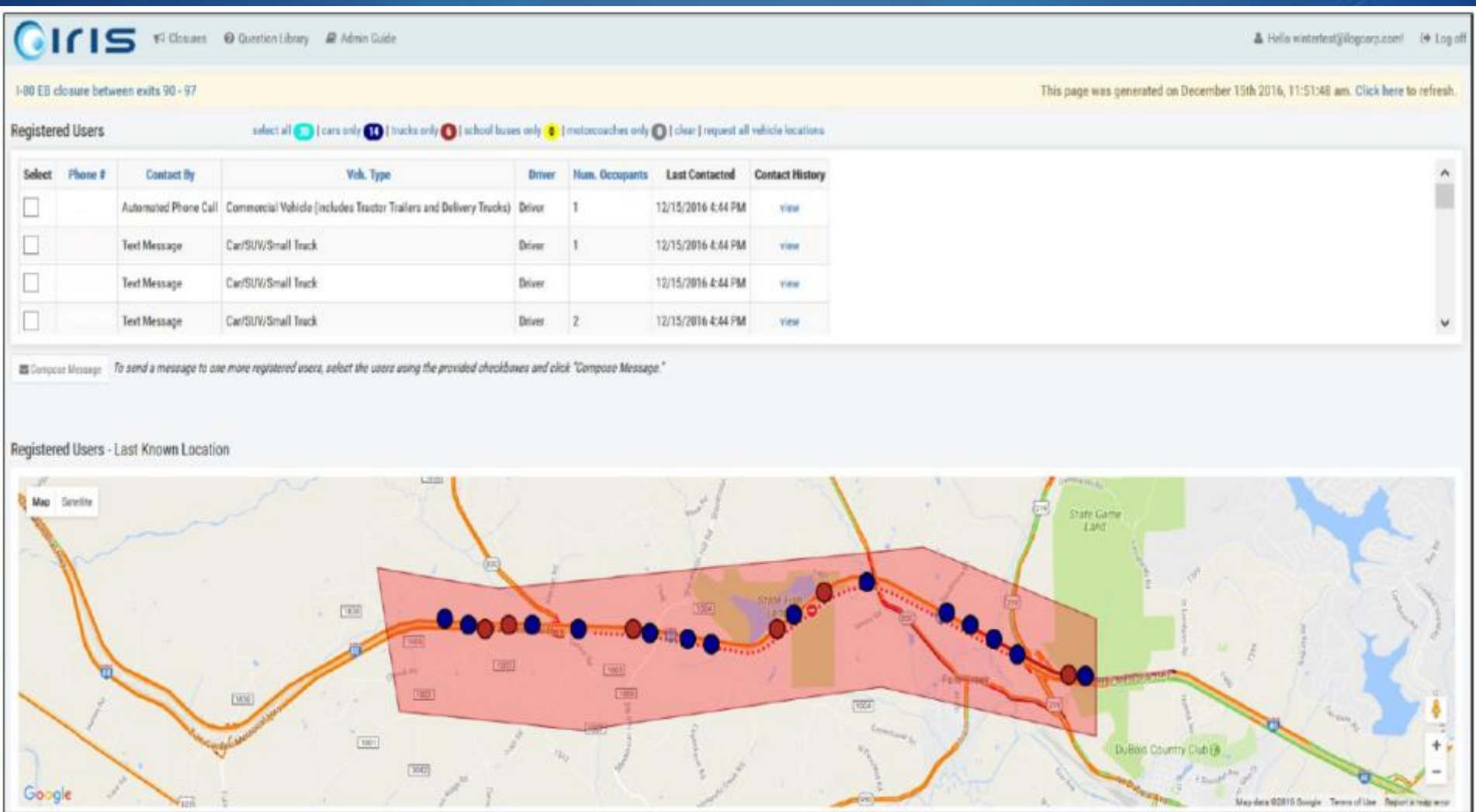
What type of vehicle are you in?

Car/SUV/Small Truck

How many occupants are in your vehicle, including yourself?

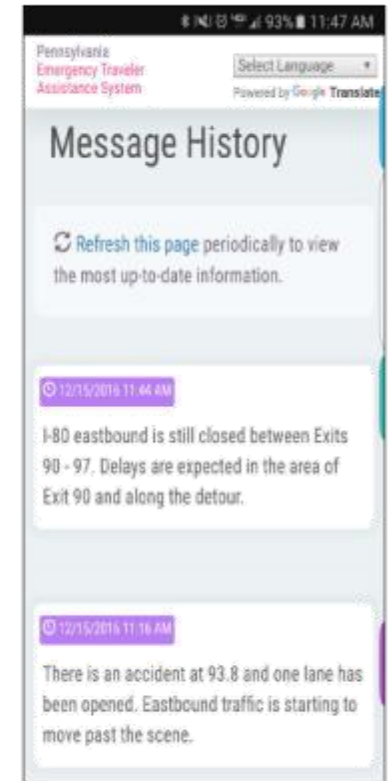
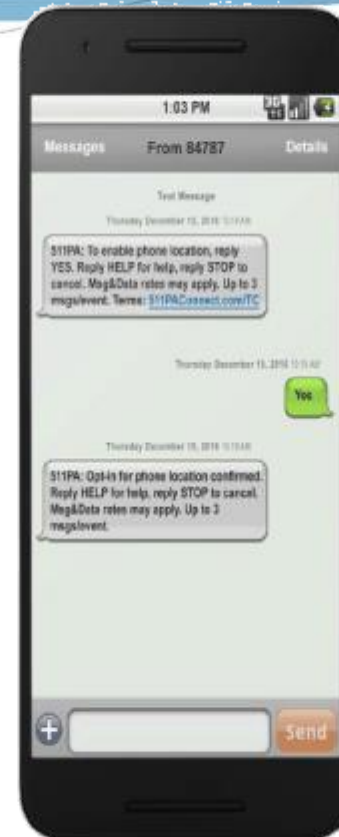
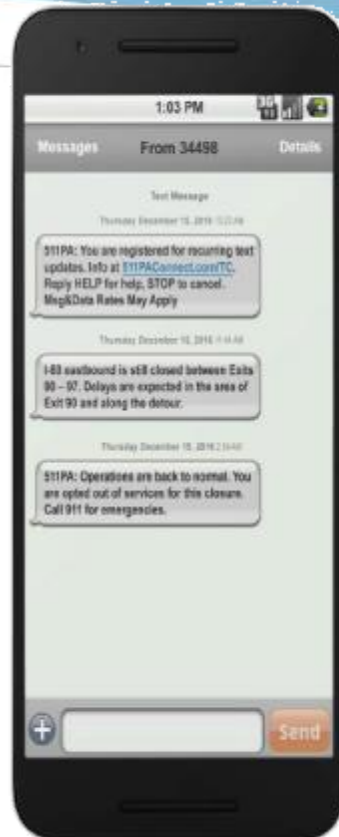
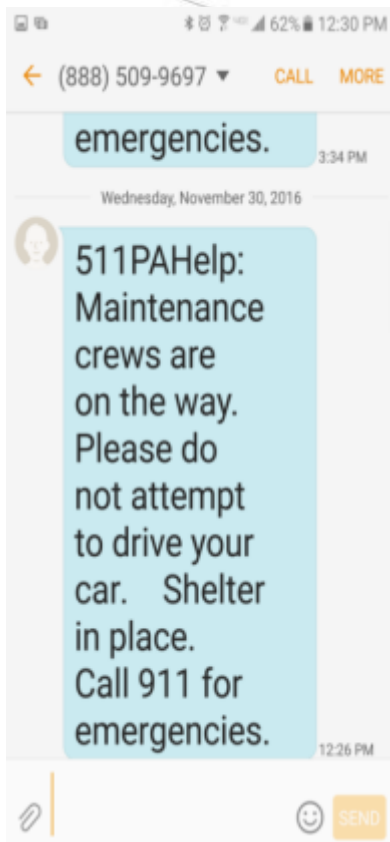
Are you the driver or a passenger?

Driver





511PA Connect - USER





Waze

Waze website interface showing a map of Jenner, Pennsylvania, with a highlighted route. The interface includes a sidebar with editing options and a main map area.

Waze LIVE MAP MAJOR EVENTS SUPPORT BLOG ABOUT

1 SEGMENT SELECTED

I-76 E, Donegal Township, Pennsylvania

Pennsylvania, PA, No city

I-76, No city

This segment is locked. You need to be a level 3 editor to edit this segment.

General Comments

ROAD TYPE

Freeway

Toll Road

Tunnel

View restrictions

DIRECTION

One way (B → A)

SPEED LIMIT

8 to A 70 mph

ELEVATION

Ground

LINK

S

Select entire street

Length: 5.2 mi
Updated May 12, 2016 by user12345
Created October 18, 2010 by Waze123
ID: 55489527

Jenner, Pennsylvania

Chat is here!

The chat is where you can talk with the other editors in your country, coordinate editing efforts, get help or assist others. Have fun and be nice!

Great! Let's Chat Go Private



Waze

- 🔹 Data feed (two-way)
- 🔹 ENS alerts
- 🔹 Map editing
- 🔹 Map reporting

PA Turnpike
Emergency Notification System

Technical problems?
Call Information Logistics at
856-324-1600, 800-317-9560,
Or at 215-675-8181 after hours.

Roadway Conditions | Approvals | **Waze** | Update Advisories | New Advisory | Tweet | Home | Logout

WebMap | WebMap Status | VMS | RWIS | Cameras | PlanX | Archives | Construction

Waze Reports

Mainline Turnpike

| Date/Time | Milepost | Type | Rating | Confidence | Reliability |
|-------------------------|----------------------------|----------------|--------|------------|---------------------------------|
| 1/9/2017 7:57 AM | Within 52 feet of MP 341.8 | Minor Accident | 3 | 0 | 5 |
| DISMISS | I-276 W | | | | CREATE ADVISORY |



Waze

Reporting

Add a new report

Report type

Road Hazard

Report subtype

Closed Lane

Comment

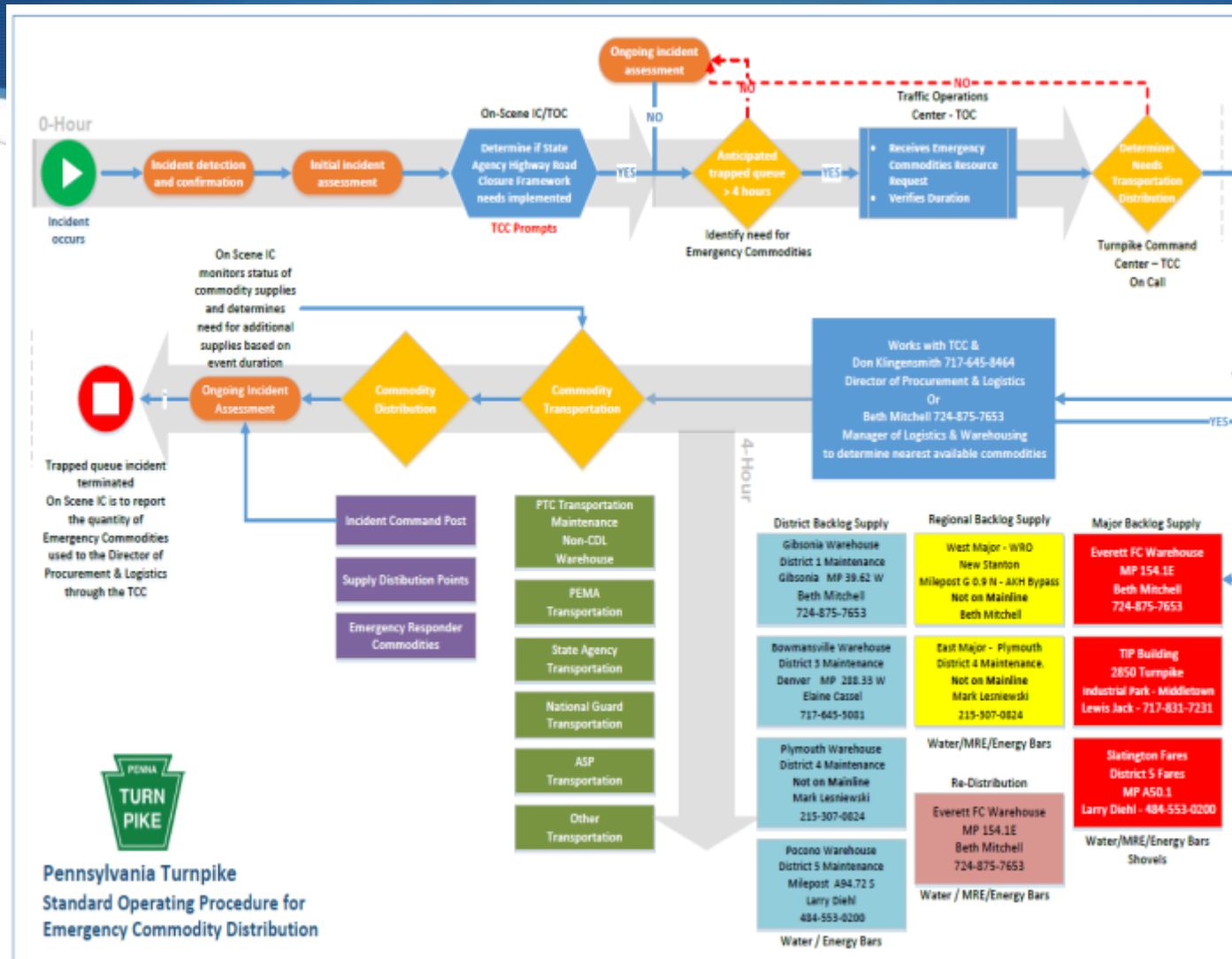
Right lane closed ahead

Close Submit

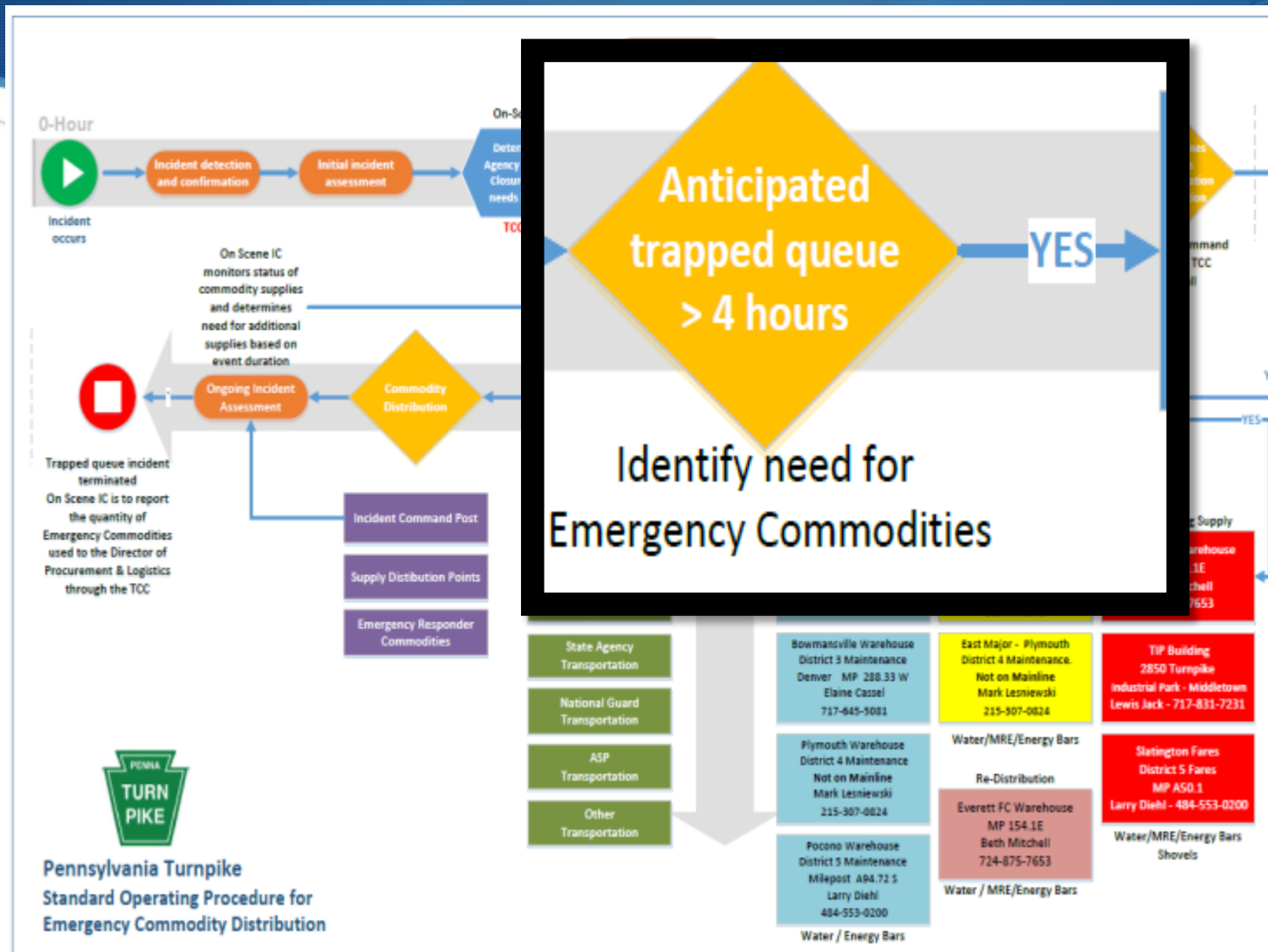
-79.205, 40.099

© 2006-2016 Waze Mobile. All Rights Reserved. Notices

Emergency Commodity Distribution



Emergency Commodity Distribution



Emergency Commodity Distribution

