



# **IMPROVING I-81 IN MARYLAND**

**April 25, 2017**  
**Stephen A. Bucy, P.E.**



# Improving I-81 in Maryland

## •Overview:

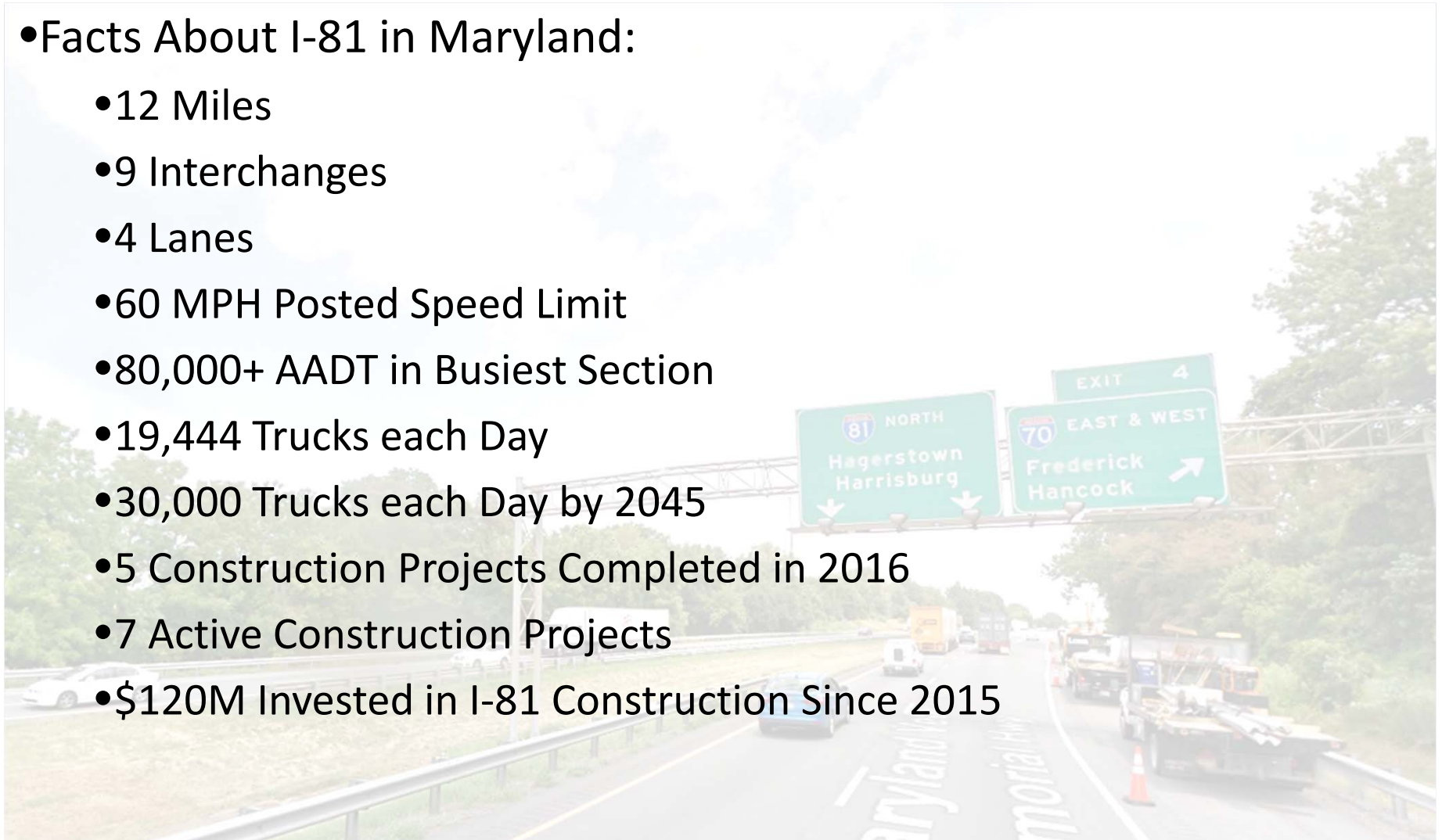
- Facts
- SHA's Comprehensive I-81 Strategy
- Current Phase 1 Widening Project Update
- Closing



# Improving I-81 in Maryland

## •Facts About I-81 in Maryland:

- 12 Miles
- 9 Interchanges
- 4 Lanes
- 60 MPH Posted Speed Limit
- 80,000+ AADT in Busiest Section
- 19,444 Trucks each Day
- 30,000 Trucks each Day by 2045
- 5 Construction Projects Completed in 2016
- 7 Active Construction Projects
- \$120M Invested in I-81 Construction Since 2015

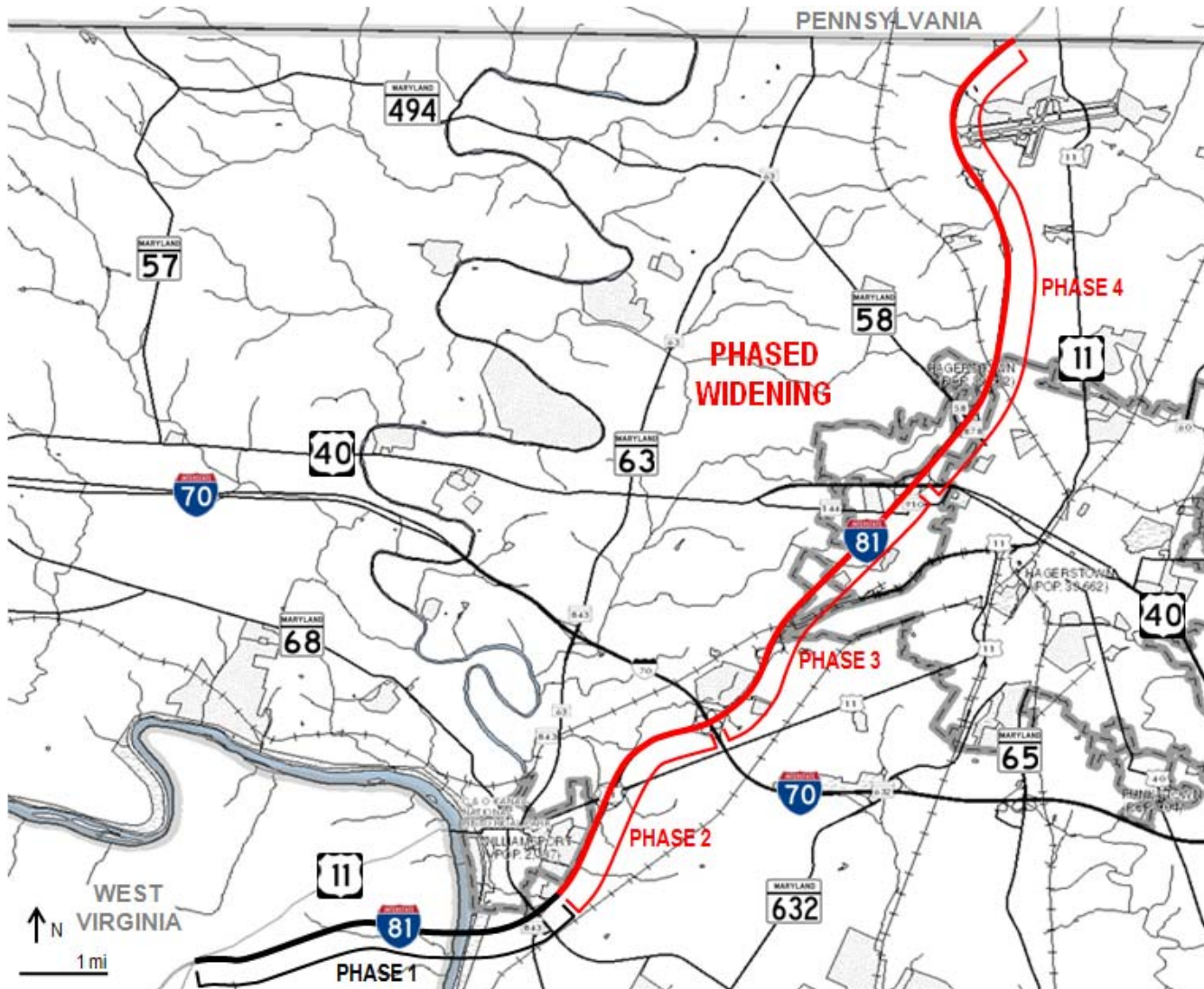


# SHA's Comprehensive I-81 Strategy

- Safety, Congestion, and Operations improvements:
  1. Major Capital Projects: Addressing congestion and accessibility throughout the entire I-81 corridor.
  2. System Preservation Projects: Upgrading existing roadway features to current Design Standards.
  3. Paving/Roadside Improvement Projects: Improving safety and ride-ability of the corridor.



# Component 1 – SHA's 4-Phase Approach Overview

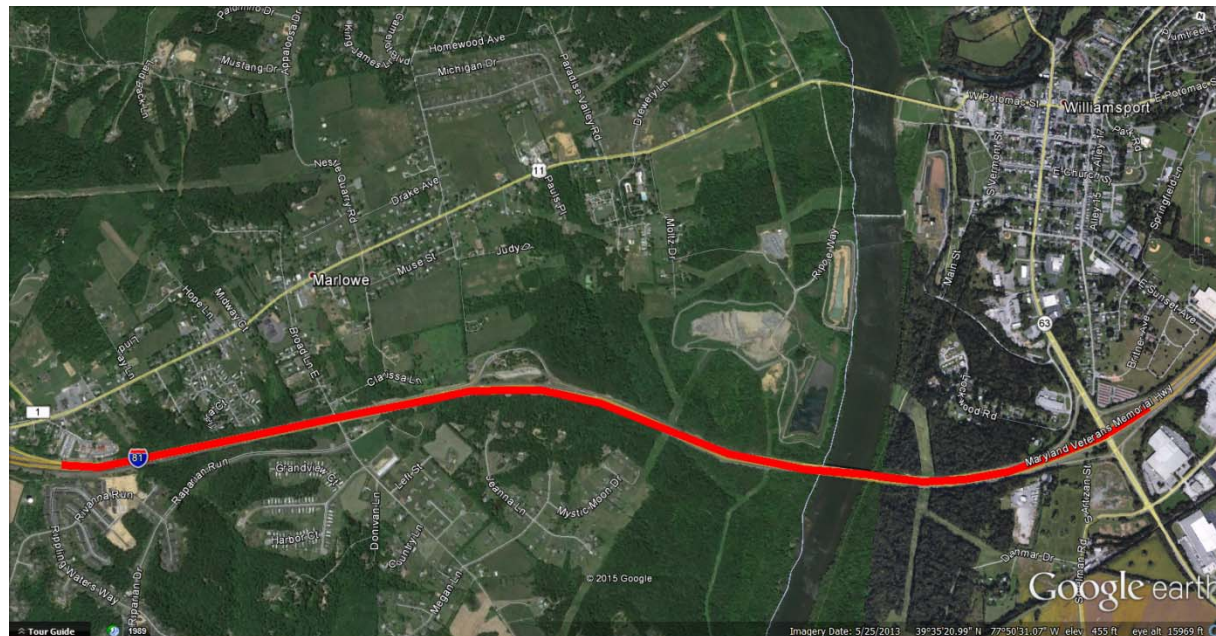


# SHA's Comprehensive I-81 Strategy

## COMPONENT 1 – Major Capital projects

### I-81 Corridor - Phase 1

- Widening between US 11 in WV and MD 68 in MD (Exit 1)
- Adding third northbound and southbound lanes in median
- Rehabilitating Potomac River and MD63/68 dual bridges to accommodate widening
- Construction Started: Fall 2016
- Estimated Completion: Summer 2020



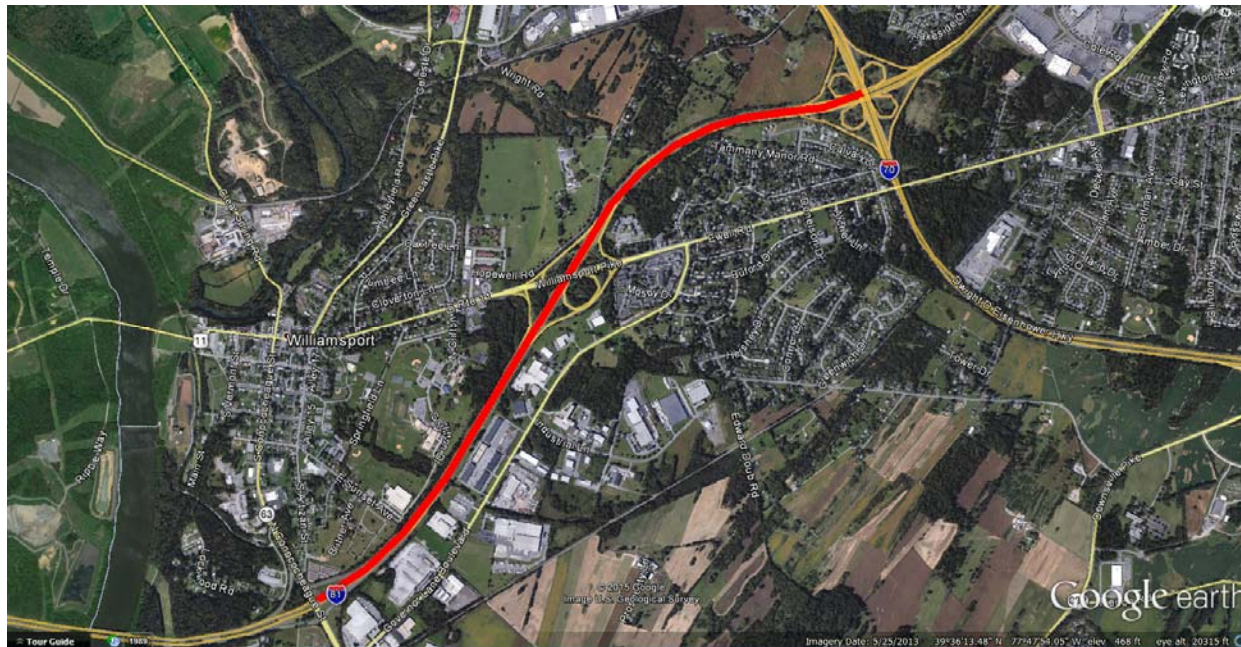


# SHA's Comprehensive I-81 Strategy

## COMPONENT 1 – Major Capital projects

### I-81 Corridor - Phase 2

- Widening – MD 68 (Exit 1) to I-70 Interchange (Exit 4)
- Adding third northbound and southbound lanes in median
- Modifications to US 11 bridge to accommodate widening
- Currently in preliminary design stage
- Submitted FASTLANE Grant Application in December 2016



# SHA's Comprehensive I-81 Strategy

## COMPONENT 1 – Major Capital projects

### I-81 Corridor - Phase 3

- Widening - I-70 (Exit 4) to US 40 interchange (Exit 6)
- Adding third northbound and southbound lanes in median
- Rehabilitating CSX R/R bridge to accommodate widening
- Currently in planning stage



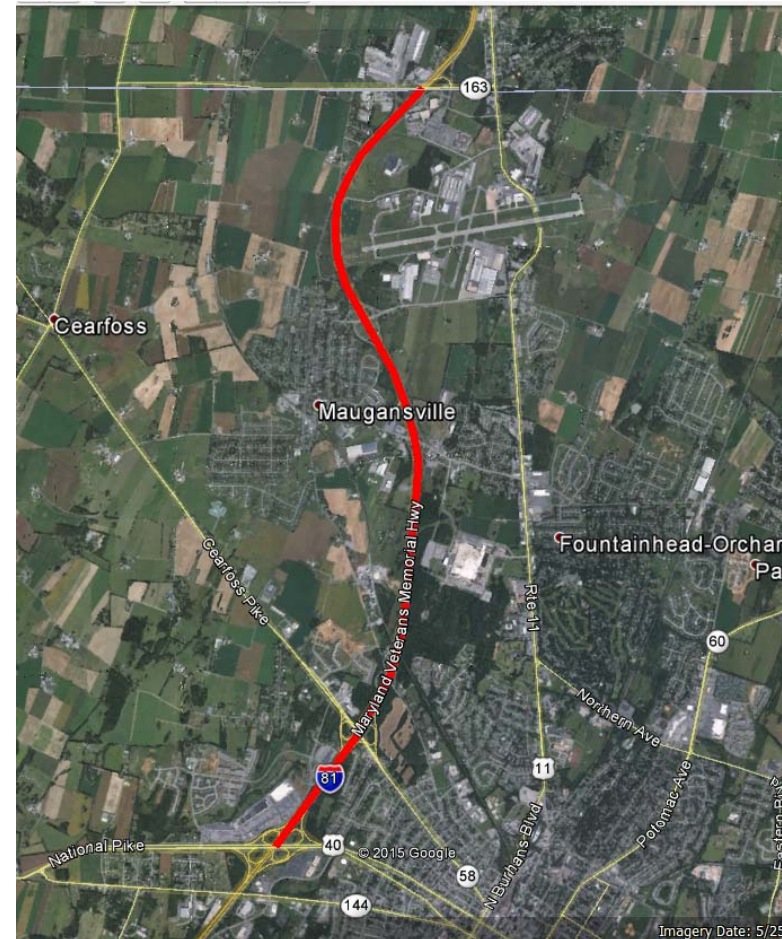


# SHA's Comprehensive I-81 Strategy

## COMPONENT 1 – Major Capital projects

### I-81 Corridor - Phase 4

- Widening – US 40 (Exit 6) to PA State line
- Adding third northbound and southbound lanes in median
- Modifications to bridges over Maugansville Rd, Conrail R/R, Maugans Ave., and Showalter Rd.
- Currently in planning stage



# SHA's Comprehensive I-81 Strategy

## COMPONENT 2 – System Preservation projects

### I-81 NB from I-70 (Exit 4) to Halfway Blvd (Exit 5), Aux. Lane

- Widening to the outside between I-70 interchange and Halfway Blvd
- Provide a continuous auxiliary lane from I-70 to Halfway Blvd
- Construction Started: Summer 2016
- Estimated Completion: June 2017



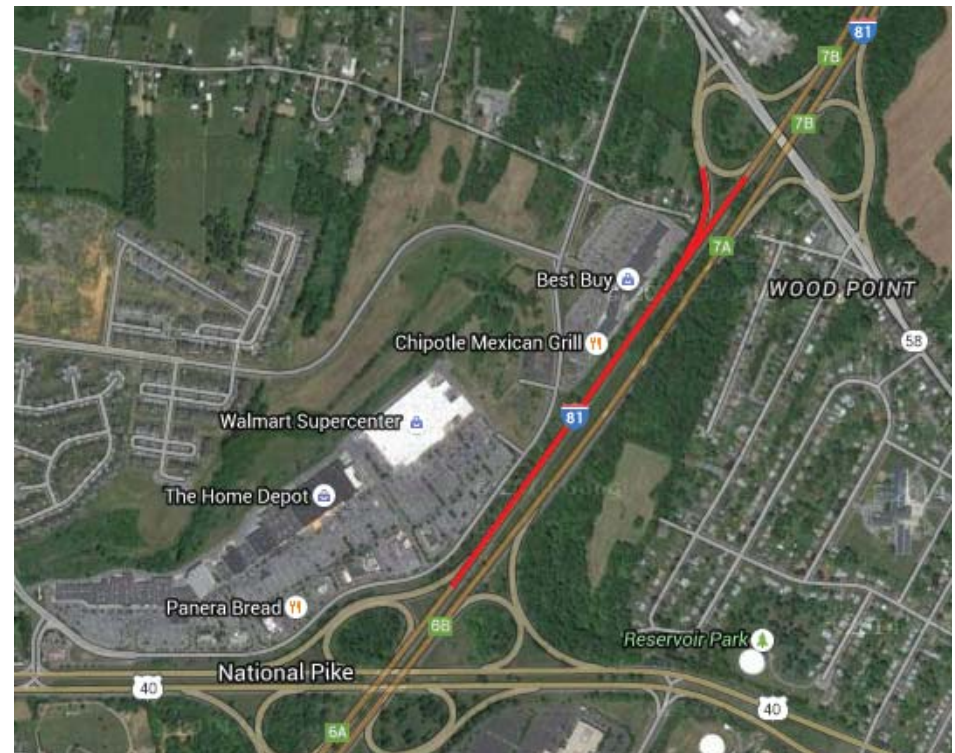


# SHA's Comprehensive I-81 Strategy

## COMPONENT 2 – System Preservation projects

### I-81 SB from MD 58 (Exit 7) to US 40 (Exit 6) Aux. Lane

- Widening to Provide a continuous Auxiliary lane from Maugan's Ave on-ramp to US 40 WB exit-ramp
- Construction Started: Fall 2016
- Estimated Completion: June 2017





# SHA's Comprehensive I-81 Strategy

## COMPONENT 2 – System Preservation projects

### I-81 Ramp Improvement from I-70 E to I-81 S, Extend Acceleration Lane

- Widening to the outside of I-81
- Lengthens merge area from I-70
- Will be completed with minor paving and pavement marking changes in Spring 2017

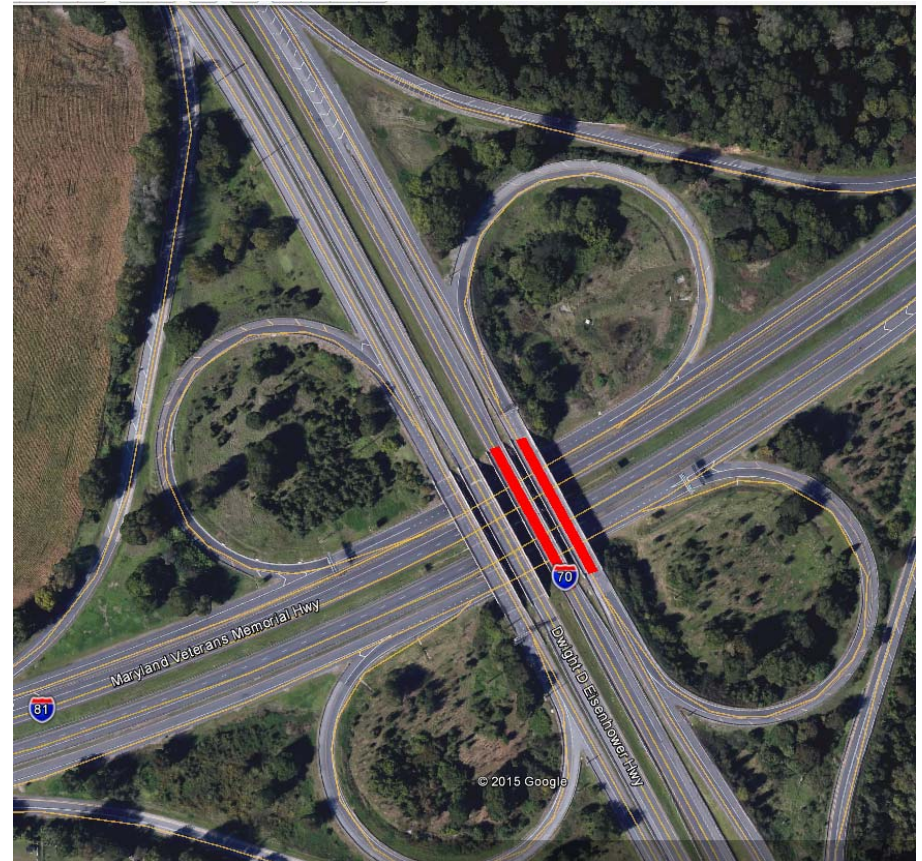


# SHA's Comprehensive I-81 Strategy

## COMPONENT 2 – System Preservation projects

### I-70 WB over I-81, Bridge Rehabilitation

- Rehabilitation of I-70 WB bridges only
- Construction Started: Spring 2017
- Estimated Completion: Summer 2018



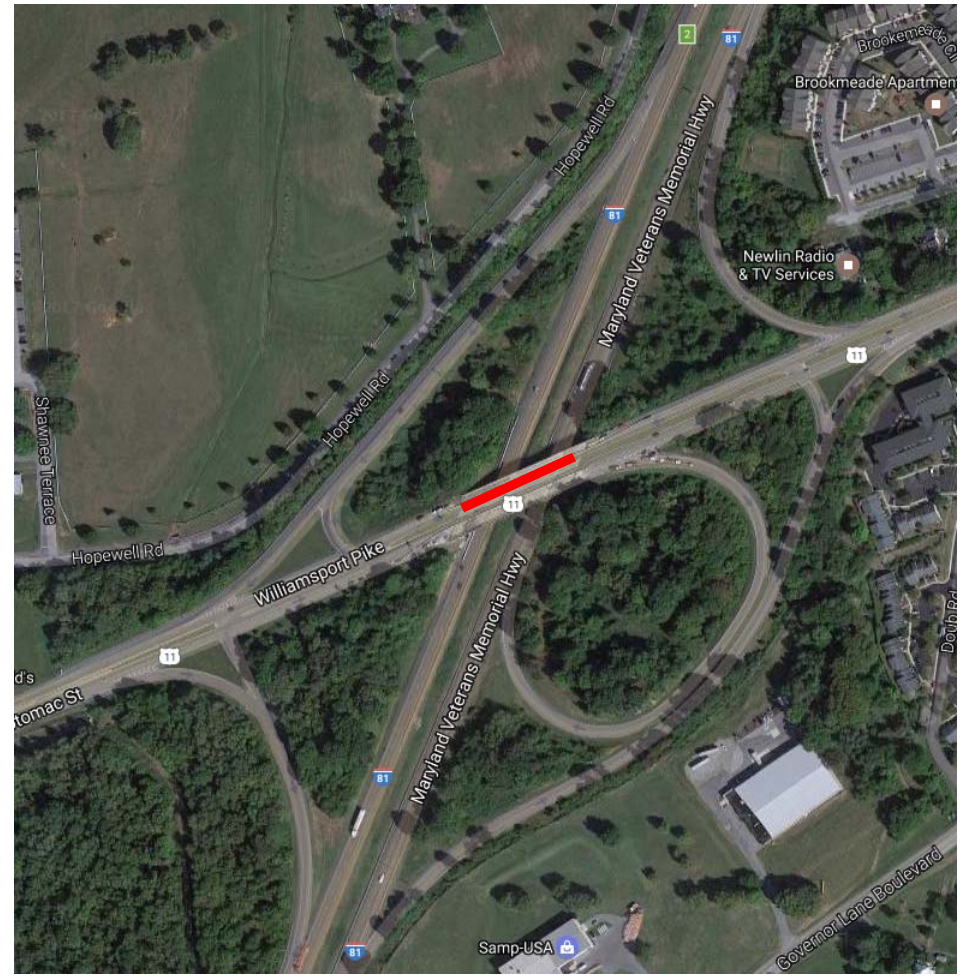


# SHA's Comprehensive I-81 Strategy

## COMPONENT 2 – System Preservation projects

### US 11 over I-81, Bridge Rehabilitation

- Rehabilitation of US 11 bridge
- Construction Started: Summer 2015
- Completion: Spring 2016



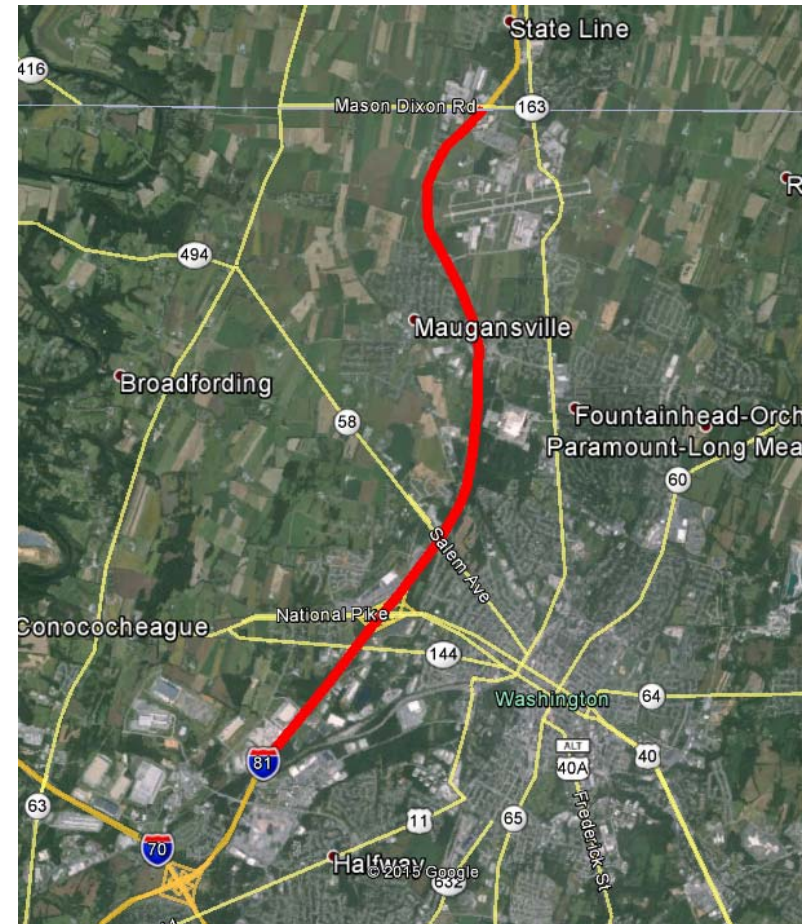


# SHA's Comprehensive I-81 Strategy

## COMPONENT 3 – Paving/Roadside Improvement projects

### I-81 NB from CSX R/R Bridge to PA State Line, Resurfacing

- Resurfacing of I-81 NB only
- Includes resurfacing of I-81 NB interchange ramps
- Construction Started: Fall 2015
- Completion: Summer 2016

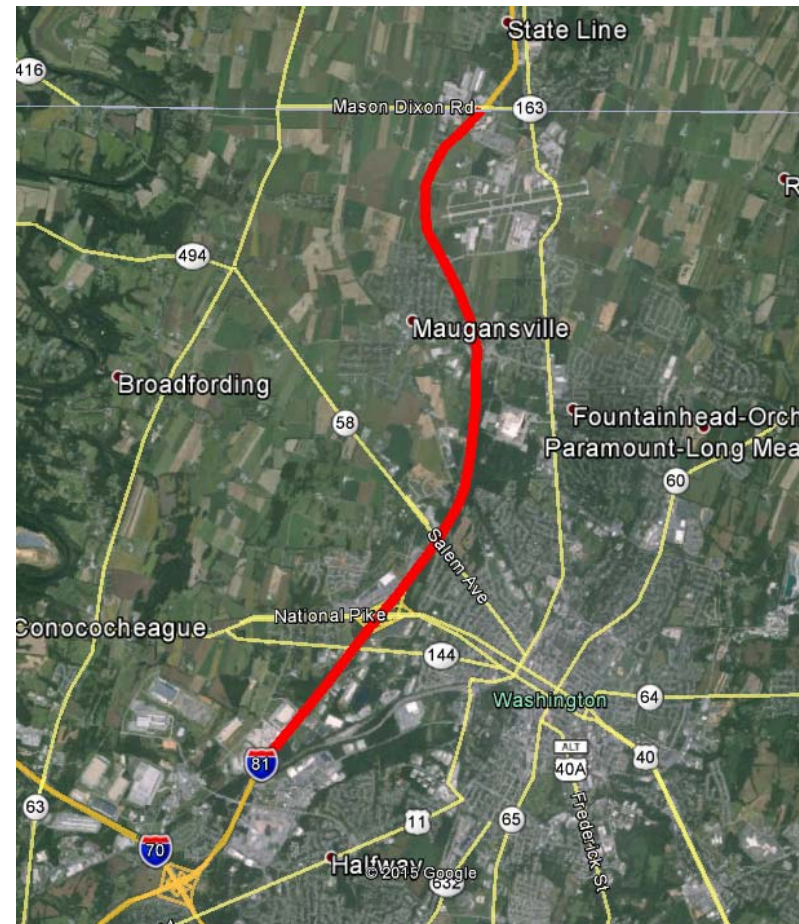


# SHA's Comprehensive I-81 Strategy

## COMPONENT 3 – Paving/Roadside Improvement projects

### I-81 SB from PA State Line to CSX R/R Bridge, Resurfacing

- Resurfacing of I-81 SB only
- Includes resurfacing of I-81 SB interchange ramps
- Construction Started: Fall 2016
- Estimated Completion: June 2017



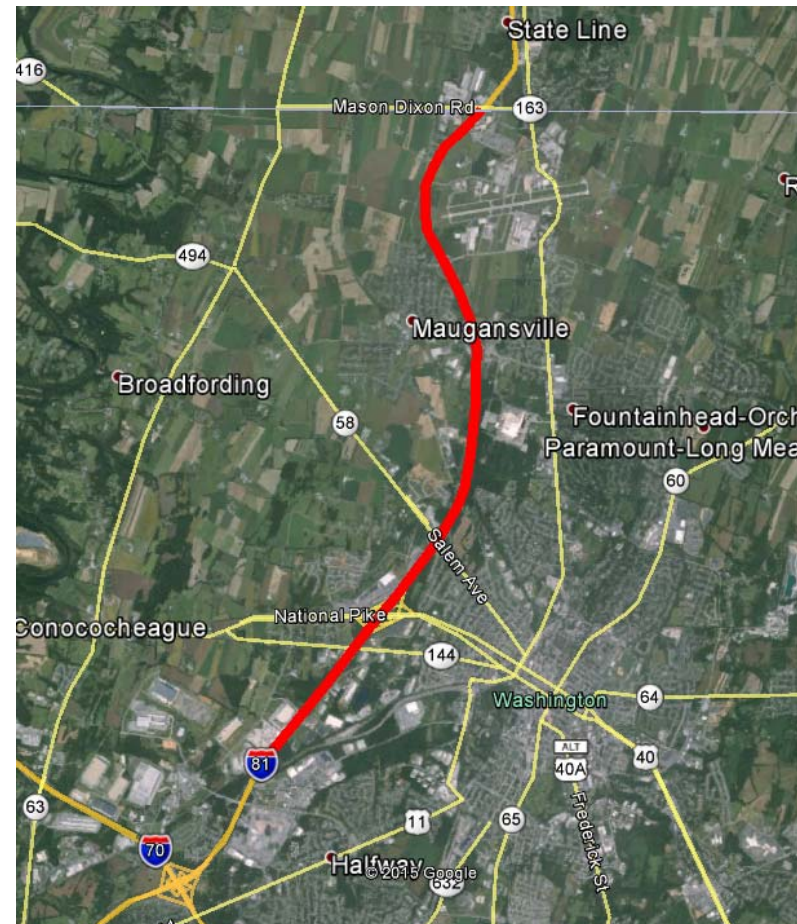


# SHA's Comprehensive I-81 Strategy

## COMPONENT 3 – Paving/Roadside Improvement projects

### I-81 from CSX R/R Bridge to PA State Line, Median Traffic Barrier

- Continuous Traffic Barrier throughout limits of project
- Construction Started: Spring 2016
- Completion: Fall 2016





# SHA's Comprehensive I-81 Strategy

## COMPONENT 3 – Paving/Roadside Improvement projects

### I-81 SB at PA State line, Shoulder Widening

- Widening to the outside of the on-ramp to provide a concrete pad staging area for oversized loads requiring police escort
- Construction Started: Fall 2015
- Completion: Summer 2016



# Improving I-81 in Maryland

## Other Projects – System Preservation & Paving/Roadside Improvement projects

### Cleaning & Painting of 9 Existing Bridges

- Construction Started: Spring 2017
- Estimated Completion: Fall 2017

### Cleaning & Painting of 4 Existing Bridges

- Construction Started: Spring 2016
- Estimated Completion: Fall 2016

### Drainage Improvements

- Construction Started: Summer 2017
- Estimated Completion: Summer 2018

### Overhead Signs/Structure Replacement

- Construction Started: Fall 2016
- Estimated Completion: Summer 2017

### Bridge Patching / Repairs

- On-going



# Improving I-81 in Maryland

## Current Phase 1 Widening Project Update:

View of  
temporary  
construction  
access bridge  
from WV  
median





# Improving I-81 in Maryland

## Current Phase 1 Widening Project Update:

Placing  
temporary  
construction  
access bridge  
sections



# Improving I-81 in Maryland

## Current Phase 1 Widening Project Update:

Footer  
Excavation for  
New SB Pier 3





# Improving I-81 in Maryland

Current Phase 1 Widening Project Update:

Rock Removal  
in Maryland  
Median



# Improving I-81 in Maryland

## Current Phase 1 Widening Project Update:

Protective  
structure for  
C&O Canal  
under bridge  
area





# Improving I-81 in Maryland

Current Phase 1 Widening Project Update:

Innovative  
Access to WV  
Median



# Improving I-81 in Maryland

## Current Phase 1 Widening Project Update:

### Project Partnering:

- “A process based on trust and an open, honest attitude in which all participants in a project recognize both common and individual objectives and work to achieve those objectives through improved communication and cooperation”



**Triton  
Construction, Inc.**



### *I-81 Turtle'eers Team*



It is our mission to work together to safely widen I-81 from WV Exit 23 to north of MD Exit 1 for the workers, project staff, citizens of MD & WV, and the thousands of motorists who ride on this section of I-81 each day. We will complete an award worthy project on schedule and within budget, while minimizing impacts to the traveling public; maintaining access to the C&O Canal Towpath; being sensitive to the environment, and surrounding area; to effectively communicate with public and private stakeholders. We will maintain the contractor's profit margin and have minimal change orders.



# Improving I-81 in Maryland

- **Closing:**

- For regular I-81 Widening project updates please visit:  
<http://apps.roads.maryland.gov/WebProjectLifeCycle/ProjectInformation.aspx?projectno=WA3442121>

- OR for other project updates statewide, please visit:  
<http://apps.roads.maryland.gov/WebProjectLifeCycle/ProjectHome.aspx>

- Stephen A. Bucy, P.E.  
Assistant District Engineer, Construction  
[sbucy@sha.state.md.us](mailto:sbucy@sha.state.md.us)

